

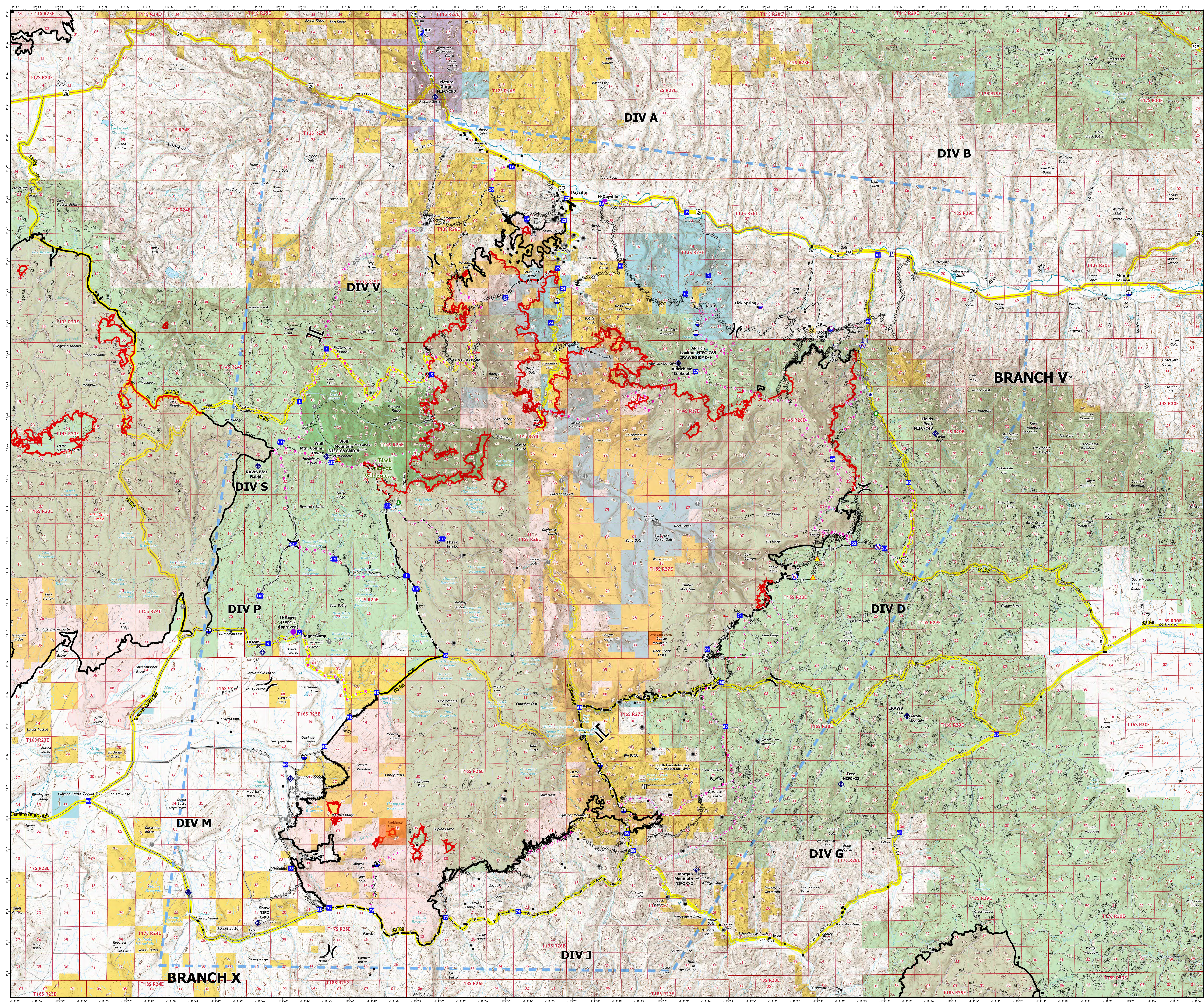
# Operations Map

## Rail Ridge Fire

OR-PRD-000761

September 19, 2024

162,345 Acres on 9/19 | 01:41



- Structures
- Helipad
- Division Break
- Branch Break
- Incident Command Post
- Drop Point
- Camp
- Staging Area
- Lookout
- Hot Spot - Spot Fire
- Value at Risk
- Landmark
- Gate
- Structure Wrap
- Hazard Tree
- Mobile Weather Unit
- Internet Access
- Repeater
- Safety Zone
- Hazard
- Dip Site
- Drift Site
- Restricted Water Source
- Other Property
- Pump
- Water Tank
- Completed Dozer Line
- Completed Hand Line
- Completed Mixed Construction Line
- Completed Road as Line
- Planned Dozer Line
- Planned Hand Line
- Planned Road as Line
- Proposed Line
- Access Route
- Temporary Flight Restriction
- Contained
- Uncontained
- Other
- Wildfire Daily Fire Perimeter
- Avoidance Areas
- Secondary Hwy
- Local Connector
- Local Road
- Trail
- Paved Road
- Gravel Road, Suitable for Passenger Car
- Road, Not Maintained for Passenger Car
- National Forest System Roads closed to motorized uses
- National Forest System Roads closed to motorized uses
- Ownership
- Bureau of Land Management (BLM)
- National Park Service (NPS)
- State
- US Forest Service (USFS)
- Private

